

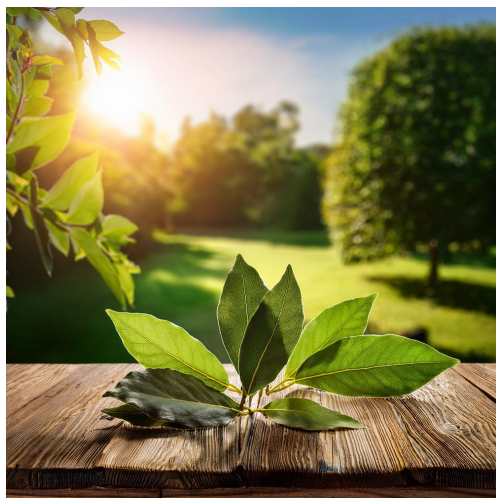
## Celestial Aligned Bay Leaf



## Crystal Vaults

Bay leaves are valued in metaphysical and emotional practices for their potent attributes, including protection, purification, strength, and manifestation. They are renowned for their ability to ward off negative energies, foster intuitive abilities, and promote courage. Bay leaves encourage clarity of thought and are believed to support successful endeavors by boosting confidence and focus. Additionally, they are associated with prosperity and can be used to enhance creative inspiration.

### Sun Aligned Bay Leaves:



When aligned with the Sun's energies of vitality, strength, personal growth, success, and positivity, bay leaves are superbly energized to illuminate one's path towards achieving goals. This alignment amplifies bay leaves' ability to draw in success and create an aura of positivity around endeavors. They are frequently used in rituals focused on enhancing personal power or ensuring success in new ventures, making them ideal for career or personal development spells.

**Mercury Aligned Bay Leaves:** In alignment with Mercury's energy of communication, intellect, adaptability, and mental clarity, bay leaves heighten one's ability to articulate thoughts clearly and adapt

swiftly to new ideas or situations. This synergy aids in overcoming communication barriers and is especially useful in spells or meditations aimed at enhancing intellectual pursuits or fostering diplomatic communication.

**Venus Aligned Bay Leaves:** Venus alignment brings forth attributes of romance, love, respect, companionship, beauty, and harmony. In combination with these energies, bay leaves are potentiated as a tool for fostering loving relationships and mutual respect. They can be utilized in rituals designed to enhance romantic attraction or maintain harmonious home environments, reinforcing bonds of love and friendship.

**Moon Aligned Bay Leaves:** Aligned with the Moon's energy of transformation, release, cleansing, introspection, and healing, bay leaves transform into a powerful tool for deep emotional healing and personal introspection. They assist in the gentle release of past burdens during full moon rituals or purification practices. Their cleansing properties promote emotional renewal and foster new beginnings by shedding unnecessary emotional baggage.

**Mars Aligned Bay Leaves:** Under Mars' assertive energy of action, courage, determination, dominance, and victory, bay leaves become potent allies in situations requiring decisiveness and bravery. Their natural strength is enhanced to provide a vigorous boost to spells focusing on competition or overcoming challenges. They serve as motivational talismans that embolden the user to act with confidence and secure victories in both personal and professional arenas.

**Ceres Aligned Bay Leaves:** Aligned with Ceres' nurturing energies, bay leaves become especially potent in fostering personal growth and renewal. The attribute of humility is accentuated under Ceres' influence, encouraging a grounded approach to personal development where giving back is as vital as receiving. In spiritual practices, using bay leaves aligned with Ceres propels individuals on paths of renewal through selfless acts and community engagement. They serve as both an emotional balm for those dealing with loss or grief and a catalyst for embracing new beginnings with grace.

**Jupiter Aligned Bay Leaves:** When aligned with Jupiter's energy, bay leaves magnify the essence of good luck and prosperity, enveloping those who use them in a sphere of growth and abundant fortune. The alignment enhances their natural qualities of protection and healing, steering the user toward positive outcomes and opportunities. As a result, bay leaves aligned with Jupiter's energy are often utilized in rituals or spells focused on attracting wealth, expanding business ventures, or fostering personal development.

**Saturn Aligned Bay Leaves:** Saturn's alignment imbues bay leaves with an extra layer of discipline and structure, complementing their inherent qualities of focus and perseverance. This blend sharpens the mind and encourages patience while navigating through life's challenges.





Consequently, bay leaves under Saturn's influence are ideal for meditative practices aimed at building resilience or creating a structured environment to foster long-term goals.

**Uranus Aligned Bay Leaves:** With Uranus's energy of enlightenment and insight, bay leaves open new channels for visionary experiences. This alignment significantly boosts the clarity and wisdom aspects of bay leaves, facilitating breakthrough ideas or innovative solutions. The herb becomes an excellent choice in rituals seeking inspiration or clarity for those looking to transcend conventional thinking and embrace original ideas.

**Neptune Aligned Bay Leaves:** Neptune's alignment with bay leaves deepens their connection to intuition and spiritual enlightenment. This fusion amplifies their power to provide spiritual insight and promote transcendent experiences. Bay leaves aligned with Neptune can be used in ceremonies or meditative practices designed to enhance spiritual growth or explore higher planes of consciousness.

**Pluto Aligned Bay Leaves:** Pluto's association of rebirth and ancestral knowledge enriches bay leaves' energies of healing and inner peace. This pairing facilitates profound transformation and karmic understanding.

**Eris Aligned Bay Leaves:** Aligned with Eris, the already protective and purifying nature of bay leaves is elevated to promote deep inner reflection and contemplation. The solitude often necessary for true introspection is supported by the tranquil energy of the herb, allowing one to delve into their thoughts without external interference. This alignment enhances the bay leaf's capacity for encouraging originality in thought processes by providing a safe and undisturbed space mentally and spiritually. The primary spiritual uses in this alignment are for fostering



original ideas and enhancing personal understanding through meditation.

**Haumea Aligned Bay Leaves:**

Aligned with Haumea, bay leaves amplify their transformative healing properties. Already potent in manifesting strength and wisdom, this alignment brings out an adaptability that aids personal growth and metamorphosis. The herb encourages flexibility in emotional responses, facilitating transformation by helping individuals let go of rigidity and embrace change. Its primary metaphysical uses include rituals aimed at personal transformation or transitions such as career changes or new life stages.



**Makemake Aligned Bay Leaves:**

Under the influence of Makemake, the creative energies latent in bay leaves are invigorated. This alignment not only enhances the ability to manifest success but also introduces new beginnings with a sense of renewal and freshness. The adaptability inherent in the leaf helps align creative thoughts into tangible forms. Spiritually, this herb can be used to ignite creativity and support projects that involve innovation or starting anew.

**Gonggong Aligned Bay Leaves:** When aligned with Gonggong's energies, bay leaves take on a more mysterious role. Their natural protection is reinforced against unpredictable events or chaotic energies surrounding personal or spiritual life. Even amidst randomness or chaos, bay leaf aids in maintaining peace and strength by grounding individuals spiritually. Its primary magical use is creating stability within chaos while still embracing the mysterious nature of life's unpredictability.

**Quasar Aligned Bay Leaves:** When aligned with Quaoar energy, bay leaves elevate their natural properties of harmony and balance. This alignment enhances the leaf's ability to promote self-belief and acceptance, helping individuals cultivate a deeper understanding of themselves. Spiritual uses include creating an atmosphere of inner peace where one can reflect on personal strengths without judgment or fear. Magically, bay leaves under this alignment can be used in rituals or meditations focused on self-love and acceptance, ultimately leading to a harmonious integration of one's true nature with the world.

**Sedna Aligned Bay Leaves:** The Sedna alignment amplifies the transformative aspects inherent in bay leaves. This synergy empowers individuals to let go of old habits and embrace change with resilience. The enhanced connection aspect imbued by Sedna allows bay leaves to serve as a bridge between personal experiences and universal energies. In metaphysical practices, this

alignment might aid those seeking profound change or undergoing significant life transitions. Emotionally, bay leaves become powerful tools for finding strength in adversity and forging deeper connections with oneself and others.



**[Shop Celestial Aligned Bay Leaf](#)**